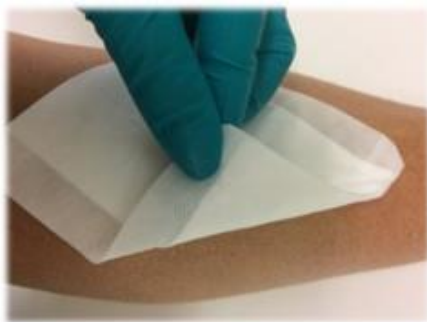




sutherlandmedical

# Introducing DryMax<sup>®</sup> Extra Soft: The Superabsorbent Dressing



WOUND CARE



sutherlandmedical

# DryMax<sup>®</sup> Extra Soft

## The superabsorbent dressing for heavily exuding wounds

DryMax<sup>®</sup> Extra Soft is a sterile, soft dressing delivering optimal absorption for treatment of heavily exuding wounds.

The superabsorbent polymers effectively capture and sequester wound fluid containing bacteria and other substances detrimental to the wound healing process and facilitates wound healing. The combination of modified cellulose fibres and superabsorbent polymers also provides a moist wound environment.

The seamless cover simplifies the positioning of the dressing and allows the dressing to be applied with either side facing the wound.

### Features:

- Unique hydrophilic contact layer transports fluid effectively away from the wound and distributes it evenly into the absorbent core.
- Absorbs vertically and prevents wound edge maceration.
- Reduces malodour and absorbs bacteria.
- Ideal under compression.
- Not made with natural rubber latex.
- Low, soft profile dressing and easy to handle.

Code	Description	Absorption capacity (Saline Solution 0.9%)	Qty
F60013/10	DryMax <sup>®</sup> Extra Soft 10cm x 10cm	130ml	10
F60013/25	DryMax <sup>®</sup> Extra Soft 10cm x 10cm	130ml	25
F60015/10	DryMax <sup>®</sup> Extra Soft 10cm x 20cm	330ml	10
F60015/25	DryMax <sup>®</sup> Extra Soft 10cm x 20cm	330ml	25
F60016/10	DryMax <sup>®</sup> Extra Soft 20cm x 20cm	800ml	10
F60016/25	DryMax <sup>®</sup> Extra Soft 20cm x 20cm	800ml	25
F60017/10	DryMax <sup>®</sup> Extra Soft 20cm x 30cm	960ml	10
F60017/25	DryMax <sup>®</sup> Extra Soft 20cm x 30cm	960ml	25

### Sutherland Medical Pty Limited

8 Kingston Town Close, Oakleigh, Victoria

Ph: 1300 664 027 Fax: 1300 664 028

Email: [orders@sutherlandmedical.com.au](mailto:orders@sutherlandmedical.com.au)

Web Site: [www.sutherlandmedical.com.au](http://www.sutherlandmedical.com.au)