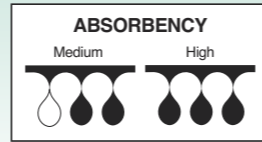


KIS™ FOAM DRESSING

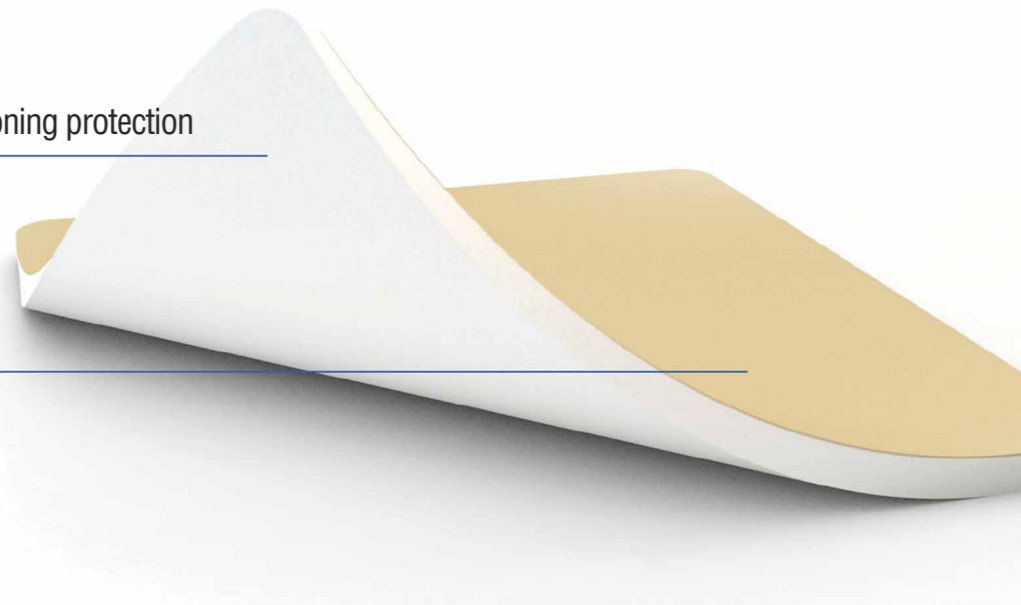
Highly versatile dressing for use on moderate to heavily exuding wounds.



KIS Foam Dressing is composed of soft and highly absorbent polyurethane, and is permeable to both gas and water vapor. It can effectively absorb wound exudate and maintain a moist wound healing environment.

Absorbent PU Foam

- Excellent exudate handling capacity
- Offers additional comfort and cushioning protection



Protective Backing

- Waterproof and bacterial barrier
- High MVTR



Waterproof backing



Shaped waterproof backing



Non-woven silicone adhesive

PROTECTION

Indications:

For moderate to heavily exuding wounds;

- Leg ulcers
- Pressure injuries
- Diabetic ulcers
- Donor site wounds
- Traumatic wounds
- Surgical wounds

Contraindications:

- Do not use this product on patients with known sensitivity to any components of the product.

Benefits:

- Various shapes and sizes.
- Highly absorbent - distributes wound exudate quickly.
- Moisture Vapour Transmission (MVT).
- Comfortable and flexible.
- Adhesive Foam has a gentle silicone adhesive border.

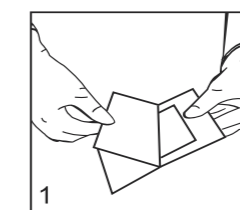
Application:

- Clean the wound in accordance with normal procedure and dry the surrounding skin gently.
- Choose the appropriate size of the dressing (1-2 cm over the edge of the wound) to cover the wound according to the wound area.
- Secondary dressing is necessary when using the non-adhesive foam dressing.
- The dressing can be retained on the wound up to 7 days. The frequency of changing the dressing depends on the amount of exudate.
- The foam dressings (Adhesive/Non-adhesive) can be used together with Amorphous Hydrogel which provides effective autolytic debridement of necrotic tissue.

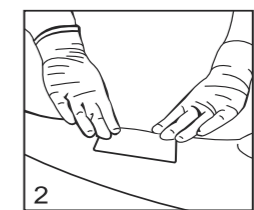
Size:

Codes	Specification
SMFD050050U	5 x 5cm
SMFD100100U	10 x 10cm
SMFD125100U	12.5 x 10cm
SMFD150150U	15 x 15cm
SMFD200100U	10 x 20cm
SMFD200200U	20 x 20cm
SMFD200130UH	13 x 10cm (heel)
SMFD100100WL	10 x 10cm (5x5)cm, 3cm (Silicone border)
SMFD150150WL	15 x 15cm (10x10)cm, 3cm (Silicone border)

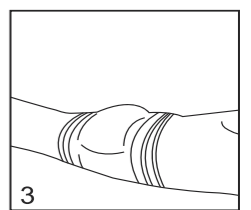
APPLICATION INSTRUCTIONS:



1 Choose proper size dressing.



2 Apply dressing directly onto the wound.



3 Secure dressing with suitable bandage or tape if necessary.