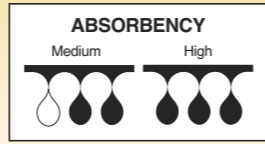




GELLING FIBRE DRESSING

Perfect balance between absorbency and wet strength.



KIS Gelling Fibre Dressing is a perfect balance between absorbency and wet strength. After absorbing the exudate, the dressing swells to form a transparent gel, preventing leakage and maceration, and maintaining the optimal moist healing environment.



After the fibres absorb exudate, it gels and has low risk of fibre shedding and dressing residue and maintains an optimal moist wound healing environment. High wet strength enables dressing removal in one piece. It is also flexible to fill cavity wounds, with easy application and removal.

A B S O R B E N C Y

Indications:

KIS Gelling Fibre Dressing is used for the management of moderately to heavily exuding acute or chronic wounds. It can also be pre-moistened for effective use on:

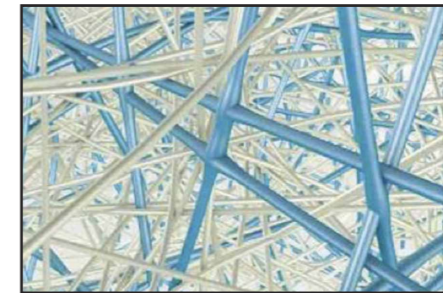
- Leg ulcers
- Pressure injuries
- Diabetic ulcers
- Surgical wounds
- Traumatic wounds
- Oncology wounds

Contraindications:

- Do not use KIS Gelling Fibre Dressing on patients with a known sensitivity to contents of the dressing.

Benefits:

- High absorption.
- Excellent retention capacity, locks in exudate and bacteria, preventing the risk of cross contamination on removal.
- Minimal lateral wicking, protecting peri-wound skin from maceration.
- Unique Anti-Shrinkage Properties, soft and flexible and contours to the wound bed to minimise dead space where bacteria can live.

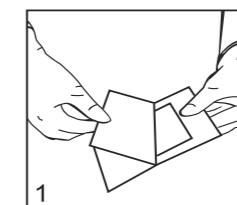


The gelling fibre technology has enhanced vertical and horizontal tensile strength and anti-shrinkage properties.

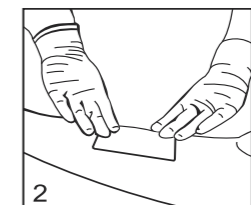
Size:

REF Code	Size
SMGF050050	5 x 5cm
SMGF300020	30 x 20cm
SMGF100100	10 x 10cm
SMGF125125	12.5 x 2.5cm
SMGF150150	15 x 15cm

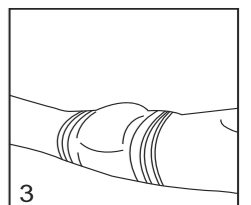
APPLICATION INSTRUCTIONS:



1 Choose correct size or cut dressing to required size.



2 Apply dressing directly onto the wound.



3 Secure dressing with suitable bandage or tape if necessary.