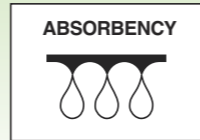


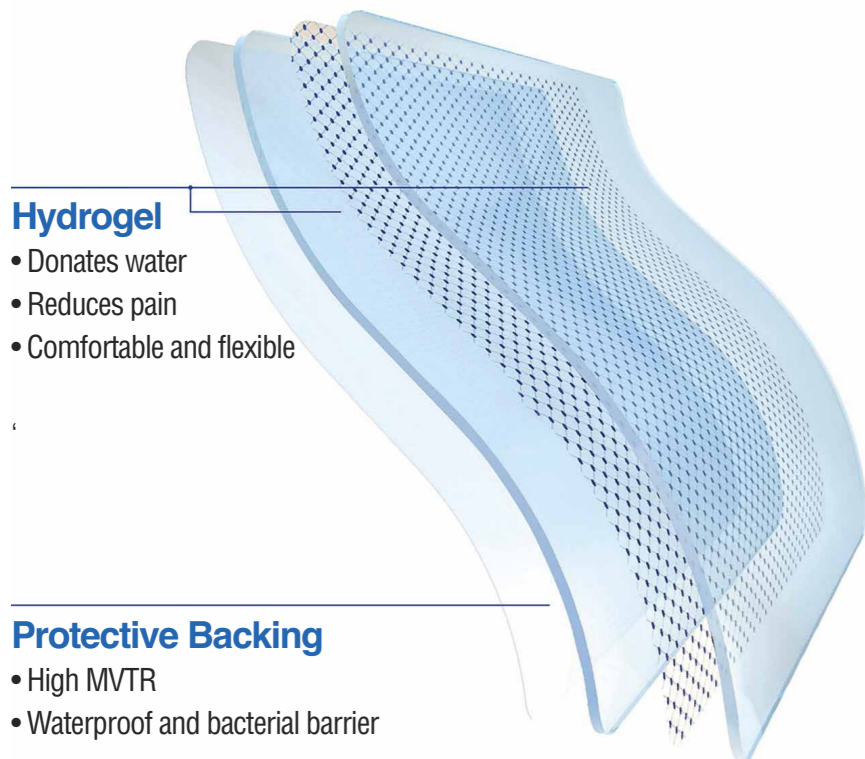


# HYDROGEL SHEET DRESSING

Advanced wound dressing for facilitating the wound healing process.



KIS Advanced Hydrogel Dressing is a semi-transparent flexible gel with the ability to absorb a minimum amount of fluid by swelling, also donating moisture to a dry wound. This cool and flexible dressing can accelerate epithelialisation as well as reduce pain.

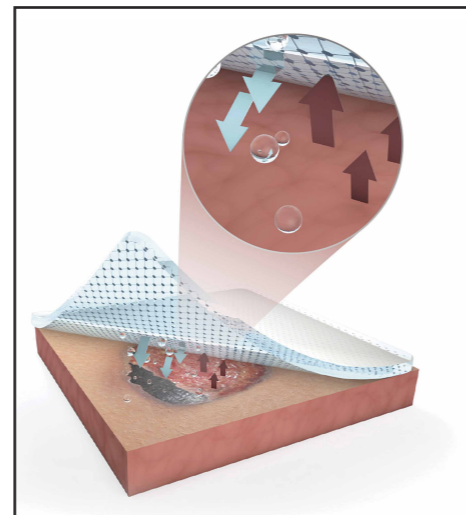


### Hydrogel

- Donates water
- Reduces pain
- Comfortable and flexible

### Protective Backing

- High MVTR
- Waterproof and bacterial barrier



### Mechanism of Action

KIS Hydrogel Dressing is highly flexible and permeable to air and moisture vapor, which is usually indicated for dry wounds to low exuding wounds. It can hydrate dry wound beds and soften and loosen slough and necrotic wound tissue to promote debridement and create a moist wound healing environment. Hydrogel dressing has also been shown to promote granulation.

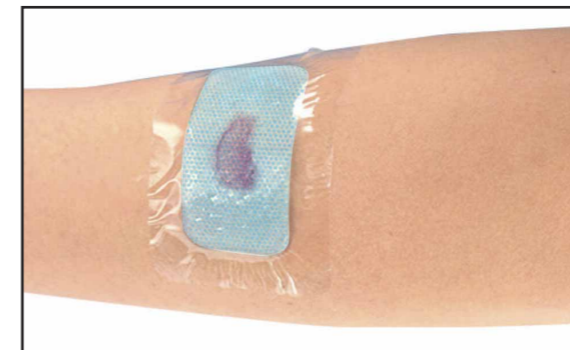
# HYDRATION

### Indications:

- Superficial burns
- Skin tears
- Pressure injuries
- Leg ulcers
- Diabetic ulcers

### Contraindications:

- This product is not indicated for complex burns or individuals with known sensitivity to the dressing.
- Do not use on infected wounds.

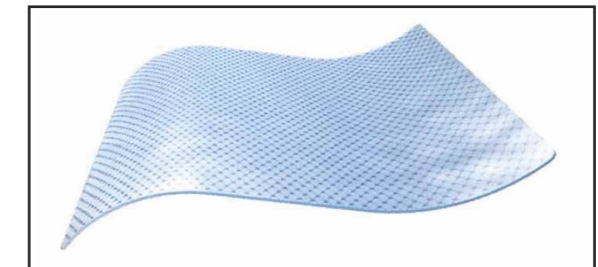


### Clear Observation

Transparent sheet for easy quick observation of wound status without removing the dressing.

### Benefits:

- Easy to apply
- Can be cut to size
- Non-adhesive to the wound
- No residue
- Reduced pain on removal.
- Rehydrates necrotic tissue and loosening slough.
- Provides a moist environment for wound healing.
- Accelerates epithelialisation.

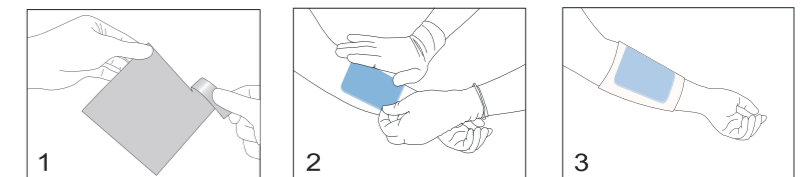


### Moisture Balance

#### Size:

Variant	Ref Code	Size
Hydrogel dressing, border, adhesive film	SMHG065045B	6.5 x 4.5 (4 x 2.5)cm
	SMHG075045B	7.5 x 4.5 (5 x 2.5)cm
	SMHG100100B	10 x 10 (5 x 5)cm
	SMHG150150B	15 x 15 (10 x 10)cm
	SMHG200200B	20 x 20 (15 x 15)cm
Hydrogel dressing, non border	SMHG050050N	5 x 5cm
	SMHG075045N	7.5 x 4.5cm
	SMHG100100N	10 x 10cm
	SMHG100150N	10 x 15cm
	SMHG100200N	10 x 20cm
SMHG150150N	15 x 15cm	

### APPLICATION INSTRUCTIONS:



1 Remove dressing from sterile packet.

2 Apply dressing gel side down directly to wound.

3 Apply a suitable secondary dressing to secure in place.